

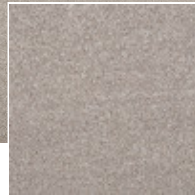
# Fairfield Heaven

## APPLICATIONS

- Bedroom
- Living Room

## TECHNICAL SPECIFICATIONS

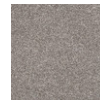
Secondary backing: Smart Back  
 Quality code: FSH  
 Manufacturing process: Tufted  
 Pile composition: Eccelena Silk



250 / Fairfield Heaven / Magnolia



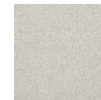
250  
Magnolia



260  
Camel



270  
Almond



440  
Ivory



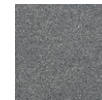
630  
Willow



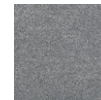
750  
Sky



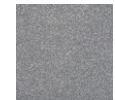
770  
Sapphire



820  
Slate



840  
Moonshine



850  
Moonbeam